



Preliminary

AC Current Switch

Model 9093

3 Phase Sensing, Solid State 120VAC Output

DESCRIPTION

Model 9093 is a three phase current switch with sensing range from 1-25A, 2-50A, 5-100A, or 10-250A. The 9093 can accommodate wires up to 7/8 inch in diameter. The trip point of the switch is continuously adjustable. The output is a solid state switch which goes from high impedance to low impedance on trip.



SPECIFICATIONS	
Sensing Range	1-15, 2-50, 5-100, 10-250
Max. Current through Sensor	> 300 A
Sensor Frequency Range	50-60 Hz
Trip Point	Adjustable
Operating Temperatures	-20°C to 85°C
Operating Voltage	120 VAC
Operating Current	< 14mA at 24 VDC when Off
Dimensions (L x W x H)	1.05 x 3.75 x 2 inches
Max. Wire Size	7/8"
Connections	(2) 6-32 x 1/4 screw terminals
Output Type	Solid State Switch, Normally High, Triac
Max. Load Current	3 A
Max. Voltage on Output	120VAC

FEATURES

- Encapsulated to prevent environmental and physical damage
- Solid-state
- Adjustment range
- Cost Effective
- Wire sizes up to 7/8"
- Rugged Industrial Design
- Outputs are isolated from monitored lines

APPLICATIONS

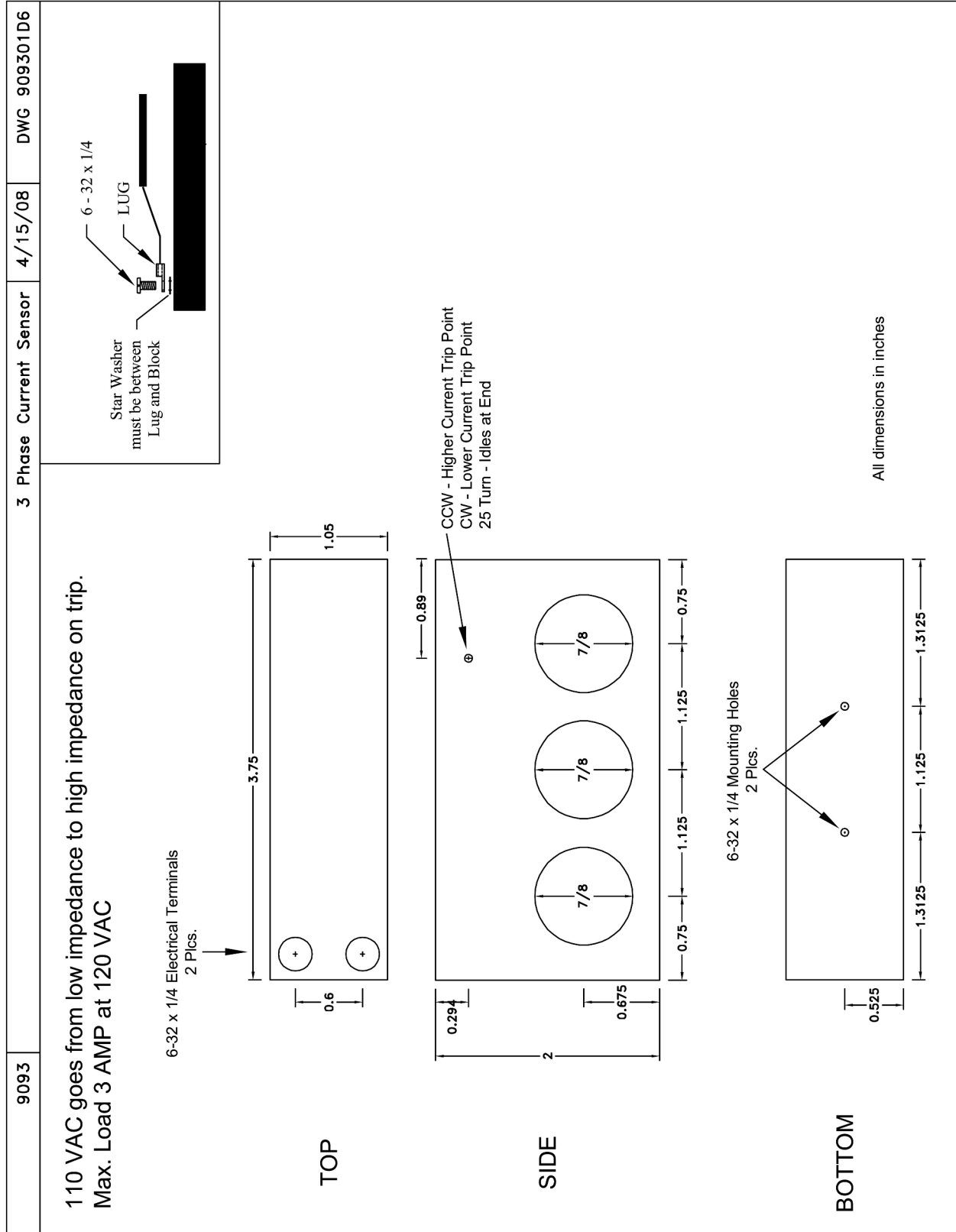
- Industrial Process Control
- Motor Control
- Protects motors
- Increases Motor Life
- Pumping
- Irrigation
- Conveyors
- Loaders
- Fans and Blowers
- Ovens and Heaters
- Waste Management
- Material Handling
- Heating, AC Control
- Environmental Control

ORDERING

Series	Sensing Cores	Sensing Range
9093	C → 3	5 → 1-25A 6 → 2-50A 7 → 5-100A 8 → 10-250A



AC Current Switch Model 9093





AC Current Switch Model 9093

